

CFS AZ Sestante Wholesale Growth Fund Monthly Investment Report

As of 31/07/2024

Latest performance*

	1-mth	3-mths	1-yr	3-yrs	5-yrs	7-yrs	Inception
Investment	3.35%	4.94%	11.32%	4.04%	4.80%	6.05%	6.33%
Super	3.03%	4.52%	10.42%	3.98%	4.63%	5.74%	5.76%
Pension	3.35%	5.01%	11.71%	4.44%	5.14%	6.40%	6.33%
Benchmark	0.71%	2.11%	8.25%	9.83%	8.39%	7.78%	7.81%

Market Review

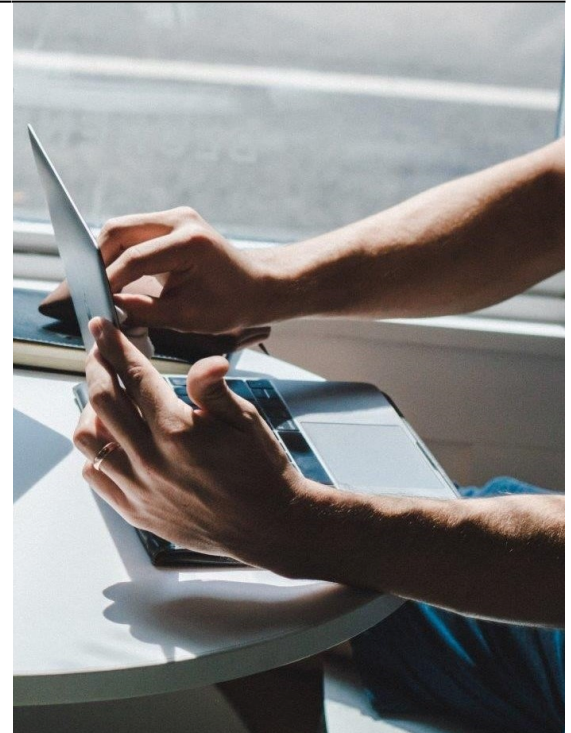
The MSCI World Small Cap (AUD) returned 9.3% in July, outperforming the MSCI World (AUD) by 5.2%. This performance difference was driven by investors rotating out of the Magnificent 7 and into interest-rate-sensitive sectors in the US, which represents around 70% of the MSCI World Index. Several factors contributed to this rotation, but one key driver is the expectation that the Federal Reserve (FED) will likely begin the anticipated rate-cutting cycle as early as September 2024. This expectation is based on a combination of FED Chair Jerome Powell's dovish comments in July, the elevated valuation of the Mag 7 stocks, and a cooler-than-expected June CPI. The June CPI report indicated softer-than-expected US inflation, with year-over-year CPI at 3%, which is 0.1% lower than the consensus, and core CPI at 3.3%, also slightly below the consensus of 3.4%.

The international fixed income market gained support as the US yield curve shifted lower, with the US 2-year Government Bond Yield and 10-year Government Bond Yield declining by 50 and 35 basis points, respectively. Over July, the Global Fixed Income Index returned 1.9% to investors. Australian fixed income delivered a positive return of 1.5% for investors in July. The positive performance of Australian fixed income was also bolstered by a lower Australian yield curve, with the 2-year and 5-year yields both shifting lower by around 15 basis points due to a benign Australian Q2 CPI result. The trimmed mean CPI, which is the preferred inflation gauge for the Reserve Bank of Australia (RBA), was encouraging for the market. The trimmed mean CPI rose 0.8% quarter-over-quarter, below the market's expectation of 1%. The lower-than-anticipated inflation data provided evidence to the RBA that inflation is not on the verge of reaccelerating. As a result, the market unwound the 20% probability of a rate hike in August and began pricing in zero odds of any rate hike going forward in the futures market.

The Australian equity market S&P/ASX 200 surpassed 8,000 points for the first time in history on 12th July, closing at a record high of 8,011. The ASX 200 Index reached multiple new records and peaked on 31st July, closing at 8,092, benefiting from the encouraging Q2 CPI result. Overall, the ASX 200 returned 4.2% in July, marking the best monthly return year-to-date. From a sector performance perspective, interest-rate-sensitive sectors performed strongly, including consumer discretionary (+9%), REITs (+6.9%), and financials (+6.3%). In contrast, energy (-0.4%) and utilities (-2.9%) were sold off, while materials (-0.1%) remained flat.

Real assets were the best performers during July, with the Global REIT Index returning 5.8% and the Infrastructure Index delivering 6.3%. This strong performance was driven by the US market, where the utilities and energy sectors delivered robust results amid the Q2 earnings season.

For a detailed market review and outlook, please refer to the Monthly Market Commentary document available on www.azsestante.com/investment-options



\$10,000 invested over time



■ CFS AZ Sestante Growth ■ RBA Cash Rate +4.5%p.a.

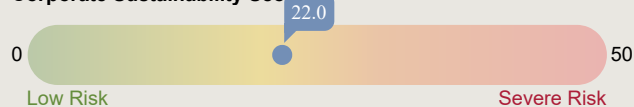
Portfolio information

- Investment Objective: target CPI +4.5% per annum over rolling 5-year periods after fees.
- Asset Class: Diversified
- Portfolio Inception Date: 5 December 2016 (for investments only)
- Management Costs:
 - Investment: 1.09% p.a.
 - Pers. Super: 1.13% p.a.
 - Pension: 1.12% p.a.
- Buy/Sell Spreads: +/-0.10%

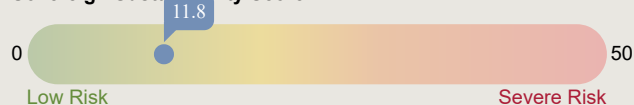
Sustainability Score

● CFS AZ Sestante Growth

Corporate Sustainability Score



Sovereign Sustainability Score



ESG Pillar Score



6.1
Environmental



8.8
Social



5.0
Governance



1.1
Unallocated

*Past performance is not a reliable indicator of future performance. Performance is calculated before taxes, model management and platform fees and after underlying investment management fees. For full details of fees please refer to the relevant platform offer documents. Performance is notional in nature and an individual investor's actual performance may differ to that of the model portfolio. Investment performance is shown from 5/12/2016 and represents modelled performance only and assumes income received is reinvested.

AZ Sestante

AZ Sestante is a specialist investment consultant focused on designing and managing a range of multi-manager model portfolios via SMAs, MDAs, and fund of funds. Our parent company Azimut is Italy's largest independent asset manager listed on the Italian stock exchange. The group manages over AU\$55 billion in assets globally including over AU\$6 billion in multi-manager solutions.
E: invest@azsestante.com. www.azsestante.com

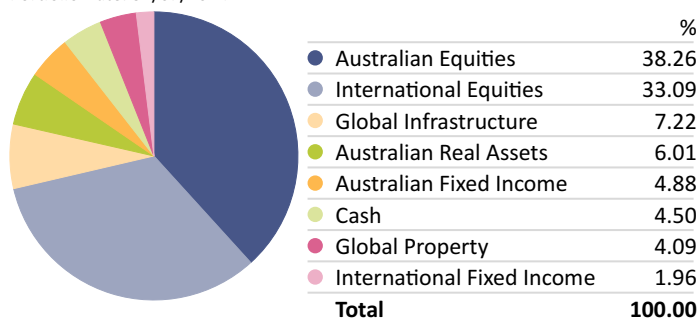
Important information

The Morningstar Historical Corporate Sustainability Score is a weighted average of the trailing 12 months of Morningstar Portfolio Corporate Sustainability Scores. Historical portfolio scores are not equal-weighted; rather, more-recent portfolios are weighted more heavily than older portfolios. Combining the trailing 12 months of portfolio scores adds consistency while still reflecting portfolio managers' current decisions by weighting the most recent portfolio scores more heavily. ESG pillar scores are displayed as a number between 0 and 100 with most scores range between 0 and 25. It is the asset-weighted average of the company environmental, social, governance risk scores for the covered corporate holdings in a portfolio. The scores measure the degree to which a company's economic value may be at risk driven by environmental, social, and governance factors. The risk represents the unmanaged risk exposure after taking into account a company's management of such risks.

This document has been prepared by AZ Sestante Limited, ABN 94 106 888 662, AFSL 284 442 (AZ Sestante). This document is not an offer of securities or financial products, nor is it financial product advice. As this document has been prepared without taking account of any investors' particular objectives, financial situation or needs, you should consider its appropriateness having regard to your objectives, financial situation and needs before taking any action. Past performance is not a reliable indicator of future results. Although specific information has been prepared from sources believed to be reliable, we offer no guarantees as to its accuracy or completeness. The information stated, opinions expressed and estimates given constitute best judgement at the time of publication and are subject to change without notice. Consequently, although this document is provided in good faith, it is not intended to create any legal liability on the part of any other entity and does not vary the terms of a relevant disclosure statement. All dollars are Australian unless otherwise specified.

Current Asset Allocation

Portfolio Date: 31/07/2024



Where your funds are invested

Australian Equities	38.26	—
CFS FC-Schroder Australian Equity	14.55	🌐🌐🌐🌐
CFS FC-Fidelity Australian Equities	12.03	🌐🌐🌐
CFS Wholesale Indexed Australian Share	7.79	🌐🌐🌐
First Sentier Australian Small Companies	3.88	🌐🌐
International Equities	33.09	—
CFS Index Global Share-Hedged	11.74	—
CFS FC-IronBk Royal London Con Glb Share	11.48	🌐🌐
CFS FC-GQG Partners Global Equity	4.83	🌐🌐🌐
CFS FC-Fidelity Asia	3.04	🌐🌐🌐
CFS Index Global Share	2.00	🌐🌐
Global Infrastructure	7.22	—
CFS Index Global List Infrastructure Sec	7.22	🌐🌐
Australian Real Assets	6.01	—
CFS FC-Martin Currie Real Income	6.01	🌐🌐🌐🌐
Australian Fixed Income	4.88	—
CFS Wholesale Indexed Australian Bond	4.88	🌐🌐🌐
Cash	4.50	—
CFS Wholesale Cash	4.50	—
Global Property	4.09	—
CFS Index Global Property Securities	4.09	🌐🌐🌐
International Fixed Income	1.96	—
CFS FC-Colchester Global Government Bond	0.98	🌐🌐
CFS FC-PIMCO Global Bond	0.98	—
	100.00	

Morningstar's Globe Ratings are just one tool that can help investors work out a fund's ESG credentials. A 5 Globe Rating indicates a fund is at the top end of its peer group in terms of sustainability, while a 1 Globe Rating shows it is underperforming on sustainability issues.

Portfolio changes

There were no portfolio changes this month.

Major Index Returns

	1 Month	3 Months	6 Months	1 Year	3 Years
S&P/ASX 200 TR AUD	4.19	6.21	7.31	13.53	7.44
MSCI World Ex Australia GR AUD	4.10	8.01	14.19	22.83	11.74
Bloomberg AusBond Composite 0+Y TR AUD	1.48	2.67	1.45	4.67	-2.15
Bloomberg Global Aggregate TR Hdg AUD	1.88	3.48	1.71	4.65	-2.54
S&P Global Infrastructure NR AUD	6.72	6.79	12.92	11.91	10.09